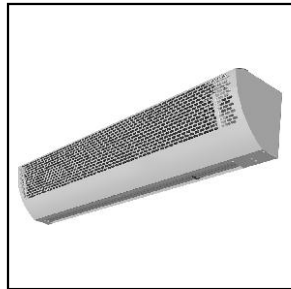


Air Curtain ECONOMIC B

These instructions contain important instructions and safety advice. To ensure correct functioning and your own personal safety please thoroughly read the following rules before operation of the air curtain and stick to them ! We reserve the right of changes in accordance with the technical development in the production. The priority of the electric schemes placed on the product is higher than these ones which are included inside of this user's manual ! Any changes or interventions to the inner connexion are prohibited, and lead to cancellation of the warranty. We recommend to use the accessories supplied by us. In the case other than original accessories or regulations are used the product may be damaged. The manufacturer is not responsible for damage occurred as a result of using non-original accessories (regulations), or improper use of the accessories (regulations). Frequency converter shall not be used to adjust the fans' rotation.



1 DECLARATION OF CONFORMITY / CERTIFICATION

More detailed information is on the internet web page www.2vv.cz

2 ECONOMIC B AIR CURTAIN

2.1 USE AND OPERATING CONDITIONS

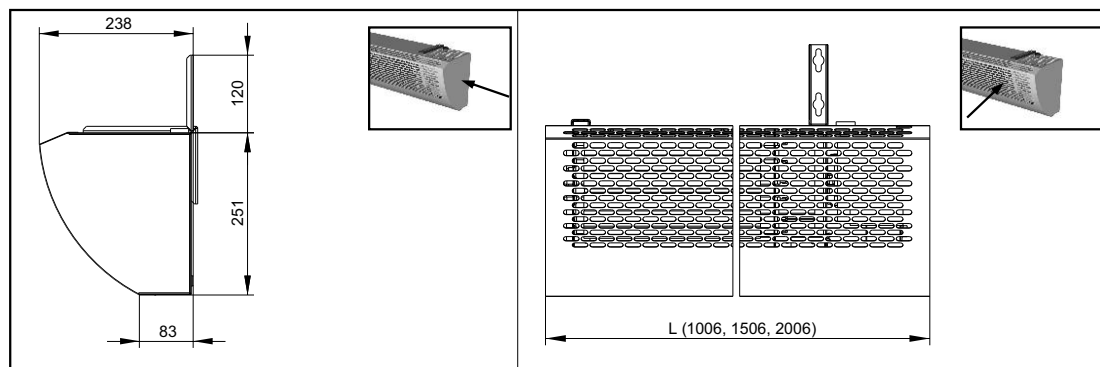
- read this instruction manual before the installation and using of the air curtain and keep the instruction thereof. You will find there the important information not only for installation and use, but also for safety and air curtain maintenance.
- close to the air curtain and in distance up to 100 mm in all directions around just incombustible materials (do not burn, do not glow, do not carbonate) or hard to burn materials (do not burn, mostly glow and carbonate e.g. gypsboard) can be used. However, these materials may cover neither inlet nor outlet openings. National technical standards are applicable for safe distance of combustible materials from electric appliances.
- as to the safety distance of the electric-heated air curtain from surfaces of structure constructions, floor covers and items made from combustible materials, the following applies:
 - safe distance of combustible materials in the direction of the main air stream (behind the outlet slot) is 500 mm
 - safe distance of combustible materials above the air curtain is 500 mm
 - safe distance of combustible materials in all other directions is 100 mm
- never start damaged air curtain.
- **assembly and connection of the air curtain must be executed by an authorised person and according to the installation hints and applicable regulations. In case you will not comply with the hints and regulations, you risk the loose of warranty !**
- we do recommend to keep this instruction manual for future reference or for possible use by another user.
- Economic B air curtains have been designed for operation indoors in dry environment with ambient temperature between 0° and +40°C for transportation of air free of fat, chemical vapours and other impurities.
- relative humidity of the air should not be over 80%.
- electric protection degree of the air curtain equipped with inlet cover is IP 20.
- operator of this air curtain should be acquainted with this manual.
- in case the air curtain has been transported under other temperatures than the operation one, it is necessary to let it under operation environment for at least 1 hour switched off to balance the inner and outer temperatures (possible humidity inside).
- as to the appliances powered by 400 VAC it is necessary to place close to that an lockable switch with minimum contactors distance 3mm in case it is not connected by a power cord, pursuant to requirements of EN 292-2+A1:2000, EN 60335-1:1997.
- main switch disconnecting all poles of the mains must be set into the mains connection.

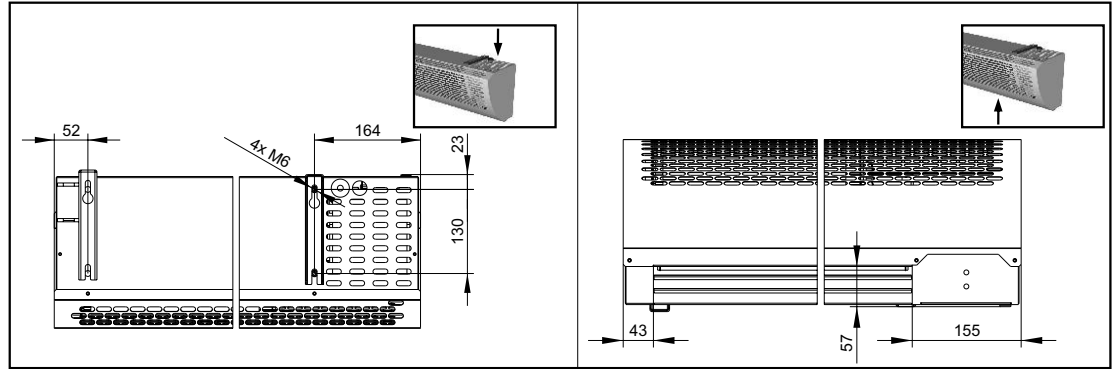
2.2 DESCRIPTION

Air curtain **ECONOMIC B** is supplied in three lengths with a water exchanger, with an electric heater available in 3 output varieties or without heater. The air curtain casing is supplied in RAL 9010 or any other RAL colour on request. Standard delivery includes 2pcs metal brackets for wall-mounting. Delivery of air curtains with water exchanger also includes 2 flexible hoses for water exchanger connection. The air curtain offers as standard, the possibility to set the direction of airflow using the directional lamellas to achieve effective separation of screened and outside environment. The air curtain is operated with SM remote control with power cables.

- Air curtain length 1; 1,5 and 2m
- Air flow reach up to 4,5m
- Electric heater in 3 output varieties; water exchanger or without heater
- 3-step fan speed regulation
- Heat output regulated by switch on SM panel (SM remote control)
- Models with a water exchanger or without heater are single phase (230V); el. models are three phase (3x380V)

2.3 MAIN PARAMETERS





Type	Heat output [kW]	Air flow volume [m ³ /h]	Speeds	Adjustable thermostat	Control	Heating steps	Voltage [V/Hz]	Input [A]	Noise level [dB(A)]	Weight [kg]
VCZ02-B-100-E-SM	6	1 350	3	No	Remote (SM)	On/Off	400/50	9,6	50,2	18,6
VCZ02-B-150-E-SM	9	2 000	3	No	Remote (SM)	On/Off	400/50	13,9	50,9	22,7
VCZ02-B-200-E-SM	12	2 700	3	No	Remote (SM)	On/Off	400/50	18,3	52,0	26,9
VCZ02-B-100-F-SM	9	1 300	3	No	Remote (SM)	2	400/50	13,9	50,1	19,7
VCZ02-B-150-F-SM	14	1 900	3	No	Remote (SM)	2	400/50	20,5	50,8	24,5
VCZ02-B-200-F-SM	18	2 550	3	No	Remote (SM)	2	400/50	27	51,9	29,3
VCZ02-B-100-G-SM	4,5	1 350	3	No	Remote (SM)	On/Off	400/50	7,9	51,3	18,6
VCZ02-B-150-G-SM	6,75	2 000	3	No	Remote (SM)	On/Off	400/50	10,7	51,7	22,7
VCZ02-B-200-G-SM	9	2 700	3	No	Remote (SM)	On/Off	400/50	13,9	52,1	26,9
VCZ02-B-100-V-SM	7,3*	1 100	3	No	Remote (SM)	-	230/50	0,9	50,4	22,7
VCZ02-B-150-V-SM	12,0*	1 650	3	No	Remote (SM)	-	230/50	0,9	51,5	28,4
VCZ02-B-200-V-SM	16,7*	2 200	3	No	Remote (SM)	-	230/50	0,9	51,6	34,4
VCZ02-B-100-S-SM	no heating	1 500	3	No	Remote (SM)	-	230/50	0,9	51,5	17,6
VCZ02-B-150-S-SM	no heating	2 200	3	No	Remote (SM)	-	230/50	0,9	51,9	20,9
VCZ02-B-200-S-SM	no heating	2 950	3	No	Remote (SM)	-	230/50	0,9	52,3	24,5

*The values correspond to inlet air temperature +18°C and water temperature drop 80/60°C.

Parameters for electric heater

Type	Heat output [kW]		Outlet temperature increase Δt [°C]	
	level I.	level II.		
VCZ-02-B-100 G (SM)	-	4,5	-	9,8
VCZ-02-B-100 E (SM)	-	6,0	-	13,1
VCZ-02-B-100 F (SM)	5,0	9,0	10,2	20,4
VCZ-02-B-150 G (SM)	-	6,75	-	9,9
VCZ-02-B-150 E (SM)	-	9,0	-	13,3
VCZ-02-B-150 F (SM)	7,0	14,0	10,9	21,7
VCZ-02-B-200 G (SM)	-	9,0	-	9,8
VCZ-02-B-200 E (SM)	-	12,0	-	13,1
VCZ-02-B-200 F (SM)	9,0	18,0	10,4	20,8

Parameters for water exchanger

Values are measured at ambient temperature 18°C and temperature drop 60/40°C.

Type	Air flow [m ³ /h]	Heat output [kW]	Outlet temperature increase Δt [°C]	Water flow [l/s]	Pressure loss [kPa]
VCZ-02-B-100-V (SM)	1100	4,1	10,9	0,05	0,8
VCZ-02-B-150-V (SM)	1650	6,9	12,3	0,08	2,5
VCZ-02-B-200-V (SM)	2200	9,8	15,0	0,12	5,7

Values are measured at ambient temperature 18°C and temperature drop 70/50°C.

Type	Air flow [m ³ /h]	Heat output [kW]	Outlet temperature increase Δt [°C]	Water flow [l/s]	Pressure loss [kPa]
VCZ-02-B-100-V (SM)	1100	5,7	15,3	0,07	1,3
VCZ-02-B-150-V (SM)	1650	9,5	16,9	0,11	4,3
VCZ-02-B-200-V (SM)	2200	13,3	17,7	0,16	9,6

Values are measured at ambient temperature 18°C and temperature drop 80/60°C.

Type	Air flow [m ³ /h]	Heat output [kW]	Outlet temperature increase Δt [°C]	Water flow [l/s]	Pressure loss [kPa]
VCZ-02-B-100-V (SM)	1100	7,3	19,6	0,09	2,1
VCZ-02-B-150-V (SM)	1650	12,0	21,5	0,14	6,4
VCZ-02-B-200-V (SM)	2200	16,7	22,3	0,19	14,5

Values are measured at ambient temperature 18°C and temperature drop 90/70°C.

Type	Air flow [m ³ /h]	Heat output [kW]	Outlet temperature increase Δt [°C]	Water flow [l/s]	Pressure loss [kPa]
VCZ-02-B-100-V (SM)	1100	79,0	24,0	0,11	2,9
VCZ-02-B-150-V (SM)	1650	14,6	26,0	0,17	8,8
VCZ-02-B-200-V (SM)	2200	20,1	26,9	0,24	19,1

OPERATION INSTRUCTIONS

2.4 TRANSPORT AND STORAGE

To minimize the possibility of damage in transport the air curtain is packed in carton box. The air curtain must be carefully handled to avoid damage if dropped. Air curtain must be stored in dry indoor environment with ambient temperature from 0° to +40°C.



2.5 DELIVERY INSPECTION

Check immediately after delivery if there is not any damage to the air curtain during the transport.

Check the data on the machine index plate with those on the purchase order. In case of any discrepancy, or of any damage on the packing, will you not unpack the air curtain and report the problem to the supplier, in case of damage of the packing call the forwarder, too. In case the claim is not applied immediately, none claim related to that can be aid in the future.

Check the index plate, in case of the discrepancy of the parameters, follow the instruction in the above sentence. The water or electric exchanger is properly secured (unless it is a cold air curtain).

All the ordered accessories and regulating devices are present.



2.6 UNPACKING

Loosen bolts of lugs fixing the air curtain to the pallet. Take the air curtain out from the transport pallet and remove the plastic wrapping. Please keep the Instruction Manual, which is located under the protective cover.

The product is shipped in protective cover. All packaging materials used are environment-friendly and they can be re-used or recycled. Please contribute to the environment protection actively. Ensure a proper disposal and recovery of the packaging materials.

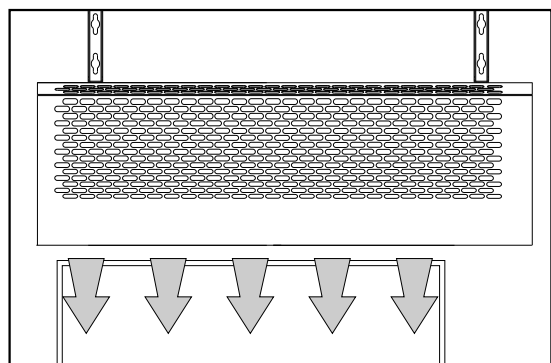
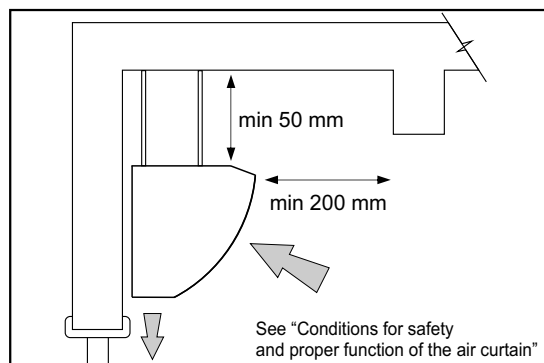
3 INSTALLATION AND ASSEMBLY

Installation and assembly of the air curtain shall be performed by skilled person or company with appropriate qualification. Suitable tools and equipment shall be available!!!

3.1 INSTALLATION INTO OPERATING POSITION

Two mounting brackets are supplied as standard with the air curtain, screwed into the upper part of the air curtain casing. If you would like to install the air curtain using threaded bars, you must order these separately. For correct functioning of the air curtain you should adhere to the following rules:

- The minimum measurements must be adhered to (see illustration and "Conditions for safety and proper function of the air curtain").
- The air curtain can be only installed in horizontal position.
- There must be at least 200mm of free space in front of the intake cover for the air curtain to function correctly.
- The air curtain exhaust should be placed as near as possible to the door or opening to be screened.
- The air curtain should overlap the curtained opening by at least 50mm on each side.
- If you are installing the air curtain above a door, position it as close as possible to the upper edge of the door. Make sure that the intake and exhaust is not screened by anything and that the air can be freely distributed throughout the area (see illustration).

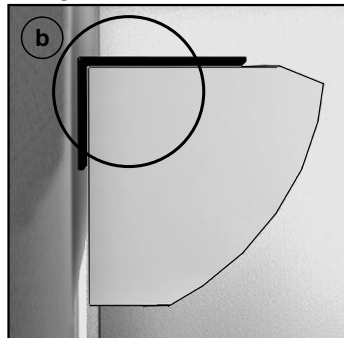
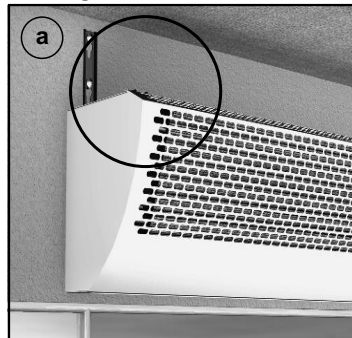


OPERATION INSTRUCTIONS

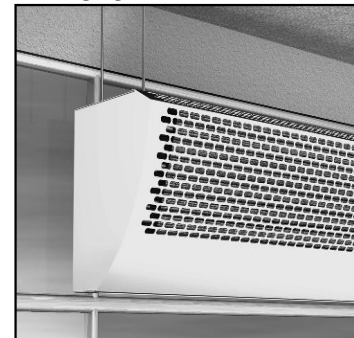
The Economic B can be used, not only as an air curtain but also equally successfully as a heating device. With a view to this, the air curtain can be mounted above a door, a sales window or on the wall. If you install the air curtain above a door, you should adhere to the recommended rules, which are part of these "Operating instructions". If however, you decide to use the air curtain as a heating device, the basic principles of heating should be adhered to. For a calculation of the number of heating sources needed, the air curtains should be numbered among sources for the heating system of the whole building.

The curtain can be installed in two standard ways:

1. Using installation brackets and fastening it to the wall.



2. Hanging on threaded bars.



Description:

As standard, the air curtain can be hung on mounting brackets above a door, if this placement allows for mounting. If the air curtain is used as a heating device, the air curtain is hung on the wall (according to heating principles). On using the brackets, you have the following possibilities:

- Is possible to use in cases where there is at least 15cm above the brackets and the user does not mind if the brackets are visible.
- Provides a possibility for installation with a smaller area above the air curtain (a minimum however of 5cm). In this case, the brackets are not visible.

If there is a ventilation window above the door, or other material which makes it impossible to install the air curtain using the brackets, it is possible to use threaded bars to hang the air curtain from the ceiling directly into the rawl plugs (as explained further on).

1. Using the installation brackets and fastening to the wall (a or b).

Prepare the following in advance:

1. 4x 6mm rawl plugs (not part of the delivery)
2. 4x 6mm screws (not part of the delivery)

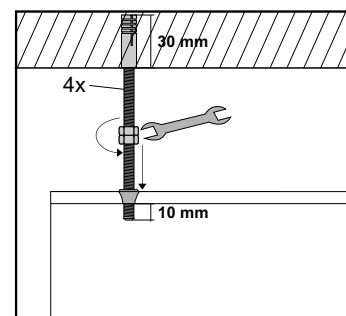
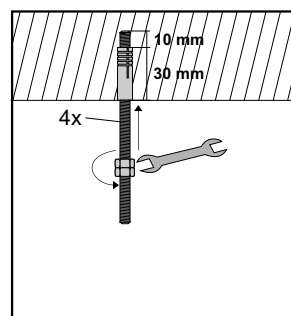
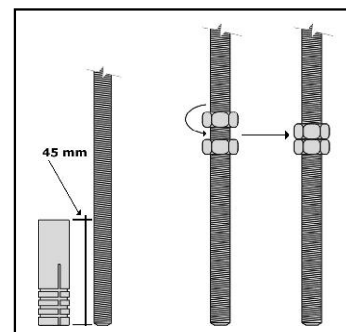
Unscrew the brackets and measure out the holes on the wall (see "Measurements") according to the measurement diagram (adhere to installation rules). Do not forget that it is necessary to choose whether the air curtain will be installed according to **1a** or **1b** and to set the height of the holes accordingly! Drill 6mm holes; insert the rawl plugs and screw in the mounting brackets (**1a** or **1b**). Screw the screws back into the holes on the curtain (only partially into the curtain), which the brackets were screwed into and hang the air curtain on these screws. Tighten the screws in such a way as to ensure the air curtain cannot accidentally fall.

2. Using the threaded bars to hang the curtain

1. 4x 6mm anchors
2. 4x M6 threaded bars
3. 8x M6 nuts
4. 6mm spanner

Before installation into the ceiling itself, ensure that the ceiling construction is capable of bearing the weight of the air curtain. The length of the threaded bars is decided in the following manner: **length necessary to screw the bar into the anchor + measured distance between ceiling and air curtain** (according to installation rules) + **10mm** (always). For example: 30mm for screwing into the anchor + 400mm distance between ceiling and air curtain + 10mm = 440mm. Shorten all bars to this length. Screw 2 M6 nuts onto each bar (see illustration).

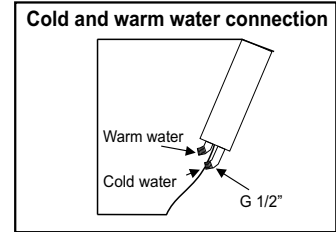
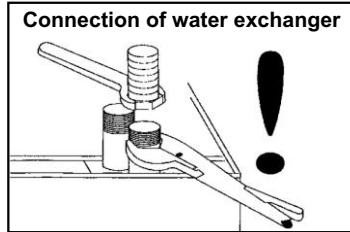
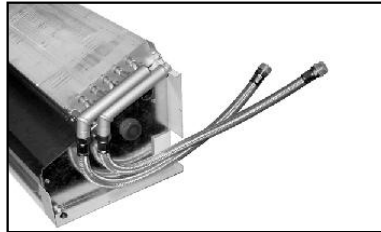
Screw them together. Measure out four holes in the ceiling according to the placement of the holes on the air curtain. Mark these places and using a drill, drill 6mm holes. Insert the prepared anchors. Screw the bars into the anchors in the ceiling, 40mm, which means leaving 10mm extra so you can screw the remaining 10mm back into the air curtain. Place the air curtain by the poles and gradually screw it on (10mm) using the spanner and nuts. Make sure that the bars are not in contact with any internal parts. Loosen the nuts on the threaded bars and screw them all the way to the ceiling. Installation is finished.



OPERATION INSTRUCTIONS

3.2 CONNECTING THE WATER HEATER

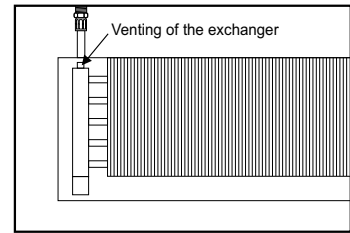
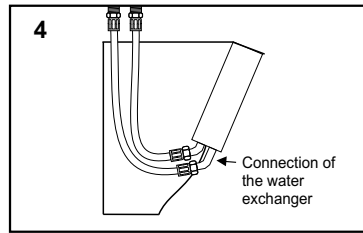
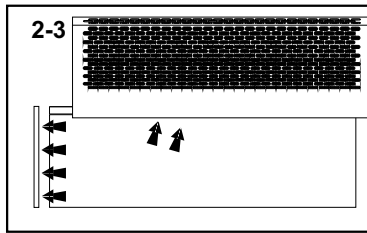
- it is recommended to use flexible hoses for connection of the water heater (supplied as optional accessories)
- connection and pressure tests must be executed by authorised person skilled in plumbing and observing the local applicable standards and regulations.
- heater is used for water of maximum pressure 1.6 MPa and temperature up to +100°C
- the order of flow and return connectors does not matter, when at least minimum water pressure is ensured in the heating system. It is recommended to connect the flow and return pipes as shown below.
- it is necessary to hold the water heater connectors in pliers during connection to avoid their damage! (See Figure)
- we do recommend the fitting of gate valves on the inlet / outlet connections to isolate for servicing.



Connection of the water exchanger must be carried out by a person who is trained in the field of water fittings and is able to carry out a leak test! Regulation of water exchanger is not solved by the supplier!

Procedure:

1. Disconnect the curtain from the electricity supply.
2. Remove the air curtain intake cover.
3. Remove the left side panels (opposite side to the control panel).
4. Prepare 2x flexible hoses, pack onto the connectors for the water exchanger and screw to hoses. Stick the other end of the hoses through the hole in the air curtain casing and screw it and the side casings back together.
5. Carry out a leak test and venting of the exchanger (the supplier does not accept liability for impermeability of the water exchanger).
6. Replace the intake cover.



3.3 ELECTRIC SYSTEM CONNECTION

The mains must be switched off before any work is to be done on the air curtain!

- for connection of the air curtain to the electricity supply and the remote controll SM, use the cable specified in the connection electric scheme
 - **electric connection of the air curtain must be executed according to the professional design of a qualified designer of electric systems. Installation must be done by a qualified electrician only. Applicable national standards and regulations must be kept!**
 - air curtain must be connected by NTSC system, i.e. with zeroing conductor always connected
 - connection of the air curtain must be carried out exactly according to the electrical connection diagram as well as the other parts of the air curtain such as the control panel. Electrical diagrams are given in this set of instructions
 - physical markings and connectors correspond to the supplied diagrams
 - technical parameters of the air curtain are mentioned on the manufactures plate
 - method of output regulation and control of the air curtain are described in the "Regulation" chapter
 - air curtain electric connection must be secured by appropriate circuit breaker according to its electric parameters.
- Due to safety reasons it is not recommended to over-design the circuit breaker

Notice: In case of fire it is necessary to extinguish the air curtain by CO₂ fire extinguisher. Never use water !!

Air curtain Type	Heater x		
	S, V	E	F
VCZ-02-B-100-x...	3 x 0,5	5 x 1	5 x 2,5
VCZ-02-B-150-x...	3 x 0,5	5 x 2,5	5 x 4
VCZ-02-B-200-x...	3 x 0,5	5 x 4	5 x 6

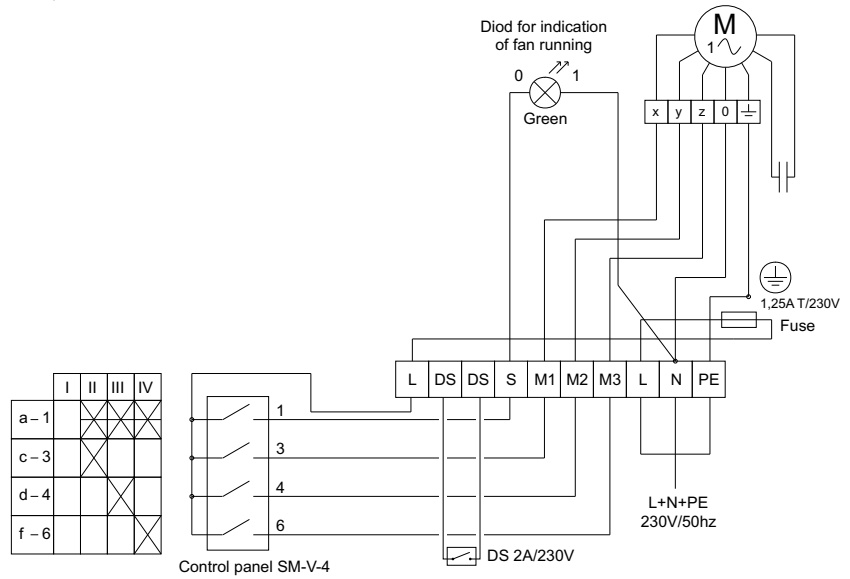
Wiring diagrams attached to the product take precedence over wiring diagrams provided in this Instruction Manual!

If the unit is connected to other than original control system it is necessary that the measuring and control elements are connected by a company having supplied such control system.

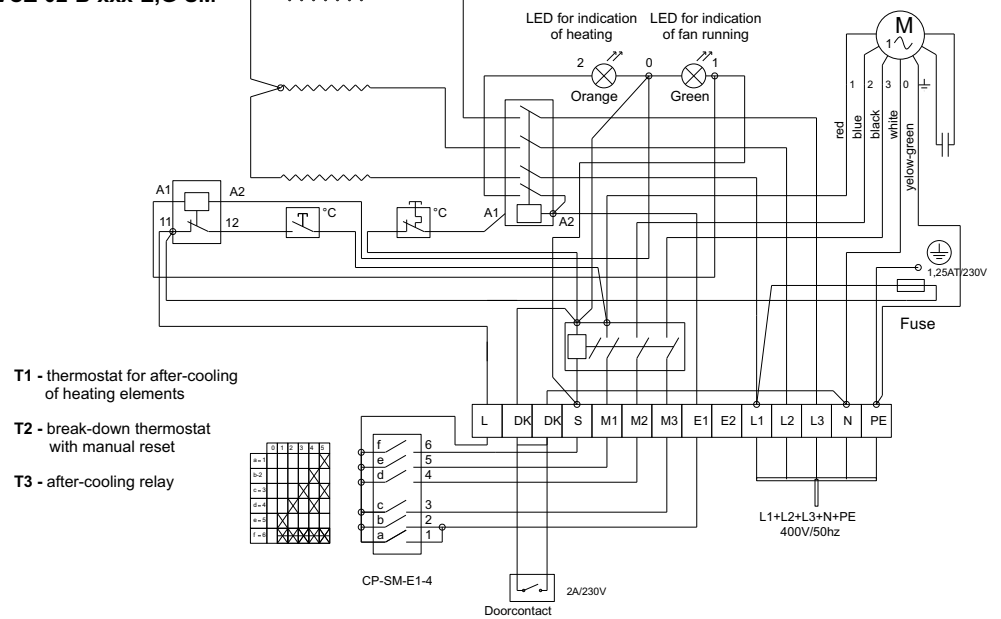
If it is necessary to install any sensors or control elements directly inside the air curtain or on its housing, it is necessary to consult such placement with the manufacturer (authorized representative).

OPERATION INSTRUCTIONS

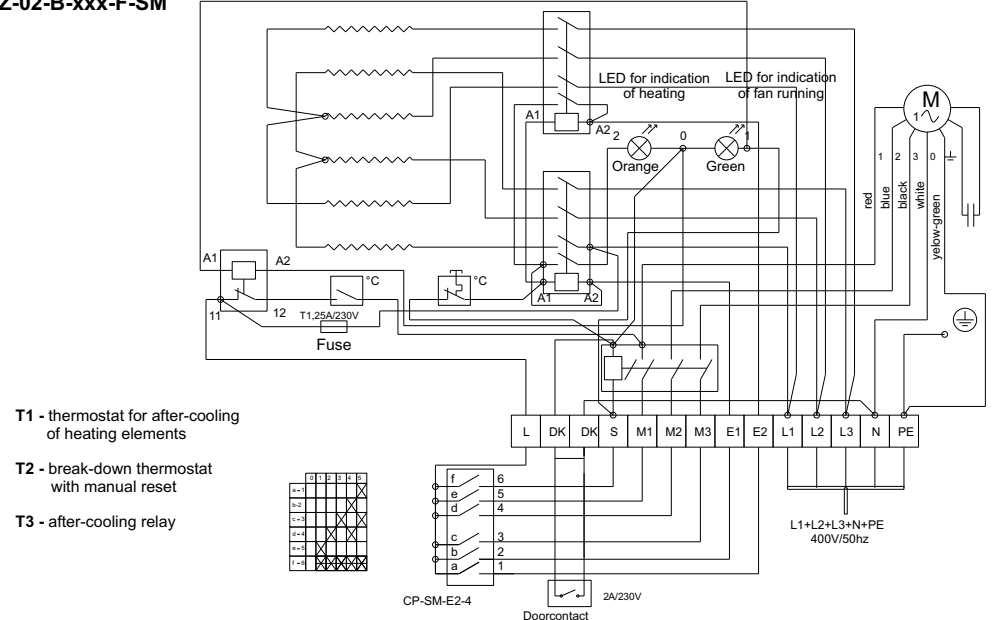
VCZ-02-B-xxx-V,S-SM



VCZ-02-B-xxx-E,G-SM



VCZ-02-B-xxx-F-SM

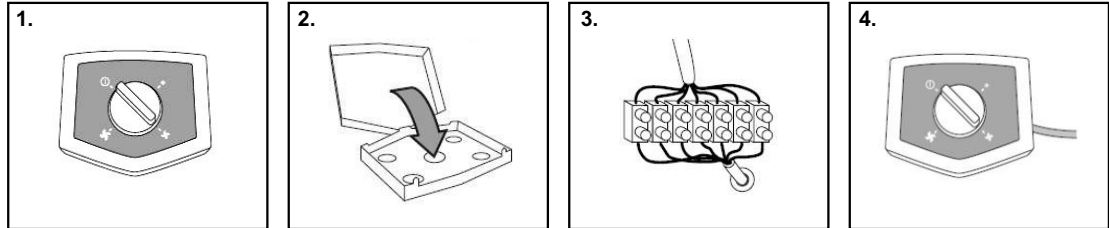


OPERATION INSTRUCTIONS

3.4 CONNECTING THE CONTROLLER

SM controller

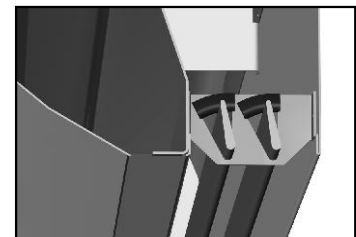
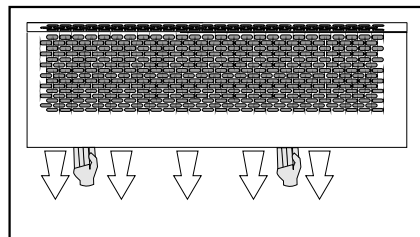
First bring the interconnection cable from the air curtain to the installation position. Pass the cables through cable grommets and perform connection in accordance with the wiring diagram provided inside the control panel housing. Observe numbering of individual terminals in the controller and on the connection terminal board inside the air curtain. It is necessary that the cables are connected to correct terminals and that numbers on the controller and terminal board comply with numbering on the wiring diagram! The opposite end of the cable harness shall be connected to appropriate terminals inside the air curtain exactly as specified in the wiring diagram located on the air curtain or at the back of this Instruction Manual.



For connection of the air curtain and the remote control SM, use the cable 0,75 x 5(7).

3.5 SETTING UP THE EXHAUST GRILLE WITH NOZZLES

The air curtain offers as standard, the possibility to set the direction of airflow using the directional lamella. Setting is accomplished by tilting the lamella (see illustration).



3.6 FINAL CHECK PRIOR TO COMMISSIONING

Before commissioning the air curtain please check whether the installation meets the following conditions:

- Installation shall meet conditions specified in the "Safety and Operating Conditions" section.
- Mechanical installation shall comply with conditions mentioned in the "Assembly" section.
- Wiring shall be in accordance with conditions provided in the "Electric System Connection" and the "Controller Connection" sections.
- If the air curtain is fitted with the water heater, it shall meet conditions specified in the "Connecting the Water Heater" section.
- The device operators were trained and provided with this Instruction Manual.
- Put the bottom cover on the air curtain and fix it using four bolts (see figures).

Any change or modification in the internal wiring of the air curtain is not allowed. Warranty shall become void should this requirements not be adhered to.

We recommend to use genuine accessories supplied by our company. In case of any doubt with regards to using any non-genuine accessories please contact your supplier.

4 OPERATING INSTRUCTIONS

4.1 SAFETY PRECAUTIONS

Never run damaged air curtain.

The product is an electrical device and thus all safety precautions with regards to handling electrical devices shall be adhered to.

Air curtain operators shall be trained and familiarized with this Instruction Manual.

The device shall only be used for the specified purpose.

It is forbidden to connect controller, sensors, power supply or to perform any other activities on the unit when it is connected to the power supply and the main switch is in I (ON) position (see air curtain description for switch information).

Never open the air curtain housing when the fan is turning and the unit is operating.

Never put your hands into the suction or exhaust ports of the air curtain, when the fan is turning and the unit is operating.

Do not cover the suction nor exhaust ports of the air curtain.

Caution: In case of fire the air curtain shall be extinguished by CO₂ or dry powder fire-extinguisher. Never use the water fire-extinguisher!

4.2 COMMISSIONING

The following items shall be checked prior to commissioning the air curtain:

Does the installation conform with all instructions provided in this Manual?

Is the air curtain free of any tools or other objects that may have been left inside and could damage the unit?

Is the air curtain closed properly?

Is the power supply and/or heating water supply connected properly?

Is the control panel connected properly?

OPERATION INSTRUCTIONS

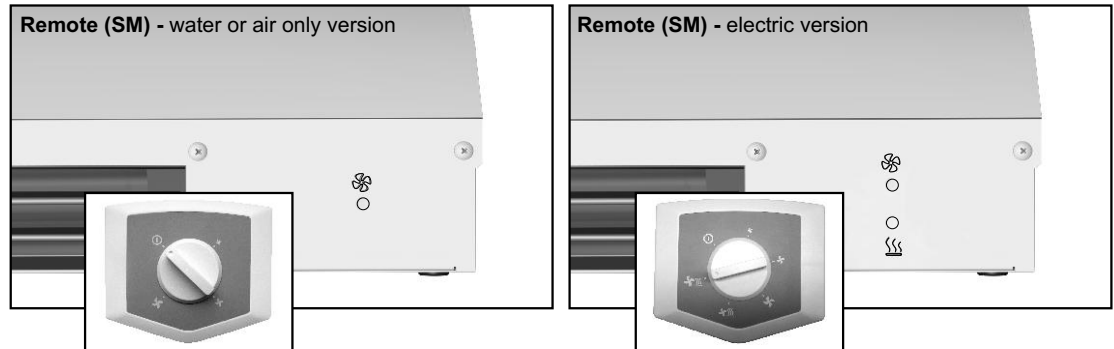
5 CONTROL

5.1 CONTROLLING SM

The air curtain is supplied with external regulation with control panel

Air curtains equipped with water heaters have only an indicator, which shows the running of the ventilator on the face and are controlled using the control panel, which has a control switch for regulation of air output in 3 stages. Versions with an electric heater have an additional indicator on the face, which shows the running of the heater and the connected controller once again regulates the air output in 3 stages and 1 or 2 stages of switching the electric heater (version E=on/off, version F=2 stage heater).

This type of regulation is not equipped with the adjustable thermostat.



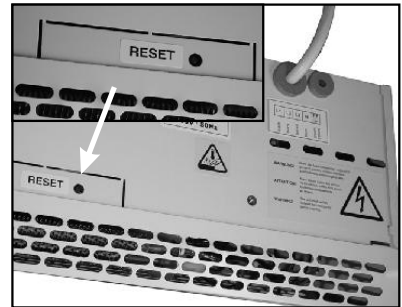
All electric versions are equipped as standard with a cooling function. This means that the air curtain will continue to blow for a certain amount of time for safe cooling of the heating bars, after they are switched off !

5.2 FAILURE CONDITIONS

If the air curtain overheats, the safety thermostat will cut off the electricity supply to the electric exchanger. Disconnect the air curtain from the main power supply and allow it to cool down. Ascertain the cause of overheating possible causes of overheating could be:

- covering of the intake or exhaust of the curtain
- too high a temperature of intake air
- blocking up of the electrical bars by dust etc.

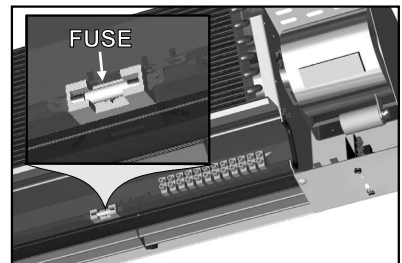
Press the Reset button (see illustration). After connection to the electricity supply, the heating function of the air curtain should start again.



Problems and how to remove them:

Before you attempt repair work of any kind on the air curtain it must be disconnected from the electricity supply !!!

1. If the air curtain does not work:
 - Check whether it is properly connected according to the given electrical diagram.
 - Remove the front cover by unscrewing the screws and check the functioning of the fuses (see illustration).
2. The ventilator has stopped working on the curtain:
 - This could have been caused by an overheating of the motor, which has an internal protection system with an automatic reset. Allow the air curtain to cool down. After a while the motor should start to run. If this is the case, it will be necessary to ascertain the cause in order to avoid a repetition of this fault (possible causes of overheating could be: covering of the intake or exhaust of the air curtain, too high a temperature of intake air, blocking up of the electrical bars by dust etc.)
3. The air curtain is not heating:
 - This could have been caused by overheating of the electrical bars. Read the chapter concerning "Overheating".



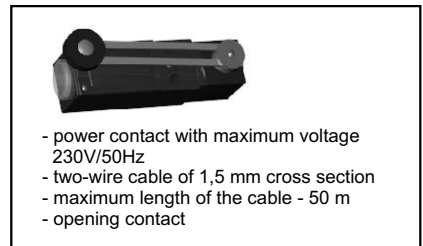
When the air curtain vibrates in a strange way, the vanes scrub, melting insulation smells or the water heat exchanger is leaky, it is necessary to switch the air curtain off immediately and to call your installer !!!

5.3 EXTERNAL SWITCHES

Door contact

The door contact is used for controlling the air curtain operation based on door opening/closing.

In case of air curtain equipped with SM controller it is first necessary to remove a jumper connecting the door contact terminals (*).



- power contact with maximum voltage 230V/50Hz
- two-wire cable of 1,5 mm cross section
- maximum length of the cable - 50 m
- opening contact

OPERATION INSTRUCTIONS

6 MAINTENANCE AND SERVICE

6.1 SAFETY PRECAUTIONS

The unit shall be isolated from the mains prior to making any intervention! Maintenance, servicing and repairs may only be performed on air curtain in a standstill condition. This means that fans are not turning and wire heating body is cold.

6.2 MAINTENANCE AND CLEANING PERFORMED BY USER

We recommend checking the air curtain in selected intervals specified in the service mode. This interval is specified when installing the air curtain and its length depends on the actual operating conditions. The air curtain is not fitted with a filter and thus filter cleaning is not necessary.

6.3 SERVICE

The warranty and post-warranty service is provided by the manufacturer or authorized service organizations. Supplier will provide a list of these organizations on a request. When requesting service it is necessary to include description of a defect and data shown on the nameplate. The ECONOMIC B air curtains are covered by 36 month guarantee, which commences on the date of sale.

Manufacturer: 2VV s. r. o., Poděbradská 289, 530 09 Pardubice, Czech Republic
www.2vv.cz, info@2vv.cz,
tel: +420 466 741 891, fax: +420 466 741 899

6.4 PRODUCT DISPOSAL

Please render the product unusable prior to disposal. Used products contain raw materials that can be recycled. Please hand these materials over to a salvaging company. It is preferable to have the product disposed of in a specialized facility, which will ensure recovery of recyclable materials. Unusable parts of the product shall be brought to a controlled dump.

CONTENT

1	DECLARATION OF CONFORMITY / CERTIFICATION	page 10
2	ECONOMIC B AIR CURTAIN	page 10
2.1	USE AND OPERATING CONDITIONS	page 10
2.2	DESCRIPTION	page 10
2.3	MAIN PARAMETERS	page 10 - 11
2.4	TRANSPORT AND STORAGE	page 12
2.5	DELIVERY INSPECTION	page 12
2.6	UNPACKING	page 12
3	INSTALLATION AND ASSEMBLY	page 12
3.1	INSTALLATION INTO OPERATING POSITION	page 12 - 13
3.2	CONNECTING THE WATER HEATER	page 14
3.3	ELECTRIC SYSTEM CONNECTION	page 14 - 15
3.4	CONNECTING THE CONTROLLER	page 16
3.5	SETTING UP THE EXHAUST GRILLE WITH NOZZLES	page 16
3.6	FINAL CHECK PRIOR TO COMMISSIONING	page 16
4	OPERATING INSTRUCTIONS	page 16
4.1	SAFETY PRECAUTIONS	page 16
4.2	COMMISSIONING	page 16
5	CONTROL	page 17
5.1	CONTROLLING SM	page 17
5.2	FAILURE CONDITIONS	page 17
5.3	EXTERNAL SWITCHES	page 17
6	MAINTENANCE AND SERVICE	page 18
6.1	SAFETY PRECAUTIONS	page 18
6.2	MAINTENANCE AND CLEANING PERFORMED BY USER	page 18
6.3	SERVICE	page 18
6.4	PRODUCT DISPOSAL	page 18